

EQIP – WaterSMART Initiative

Opportunities available in Madera and Fresno Counties



What is EQIP-WaterSMART?

WaterSMART stands for Sustain and Manage America’s Resources for Tomorrow and is a program of the Department of Interior’s Bureau of Reclamation (USBR).

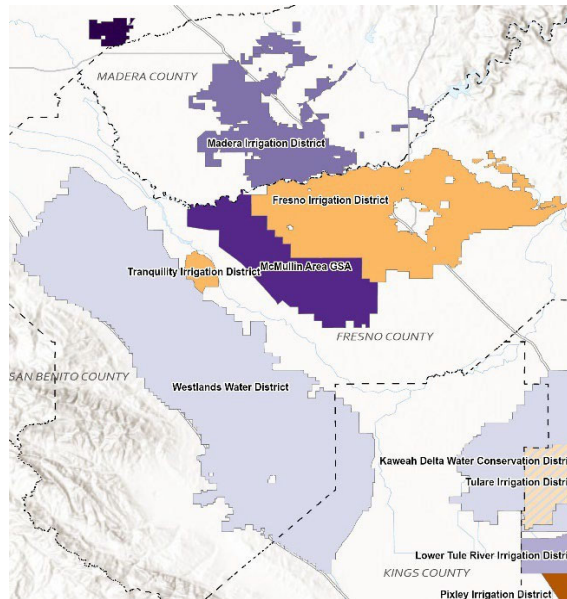
Through this program, USBR supports water conservation planning and improvement projects by states, tribes, local governments, irrigation or water companies, and other organizations.

In partnership, NRCS offers Environmental Quality Incentives Program (EQIP) funding to improve water conservation and irrigation water use efficiency on eligible farms within the boundaries of a District that has received WaterSMART funding. These farm-scale projects complement the District-wide water conservation projects funded through the USBR.

EQIP WaterSMART projects in Madera and Fresno Counties prioritize reducing groundwater withdrawals and improving irrigation efficiency.

Am I eligible?

Farms across Madera and Fresno Counties are eligible for regular EQIP funding. Farmers in WaterSMART boundaries, identified on this map, can compete for the additional funds provided through the WaterSMART Initiative.



How do I apply?

Submit an application form (Form 1200) to your NRCS Service Center.

**Application Deadline
November 15, 2024**

Ensure you have all eligibility documents filed.

Make an appointment with NRCS to develop a plan.

For irrigation projects, bring a design and estimate from your vendor if you have them.

Contact

Fresno Service Center

559-276-7494

Madera Service Center

559-674-4628

For more information on how to apply, please visit: nrcs.usda.gov/getting-assistance/how-to-apply

What can I do?

Conservation practices that are eligible for EQIP WaterSMART in California include:

Irrigation Efficiency

- Microirrigation system
- Irrigation ditch lining
- Irrigation pipeline
- Irrigation reservoir
- Irrigation water management

Water Conservation

- Mulching
- Cover crop
- Reduced tillage or No-till
- Well decommissioning
- Windbreaks and Hedgerows

